



Laurentian University
Université Laurentienne

INTERNATIONAL VIEWBOOK 2024

LAURENTIAN



Let's make it happen.

Sudbury | Ontario | Canada



EduCanada
A world of possibilities
Un monde de possibilités
educanada.ca



Study in Canada



Imagine yourself in Canada to earn your bachelor or graduate degree.
Seize the opportunity and experience an outstanding journey.



2nd largest country in the world!

AREA: 10,000,000 km²



Niagara Falls, Ontario



Swift Current, Saskatchewan



Québec City, Québec



Gros Morne National Park, Newfoundland



Toronto, Ontario



Vancouver, British Columbia



Banff National Park, Alberta



Ottawa, Ontario



POPULATION OF
38.25 million



Two official languages:
English and French



The province of Ontario and our northern oasis

Ontario is a province of many contrasts and a postsecondary destination of choice



VAST TERRITORY:
1,076,000 km²



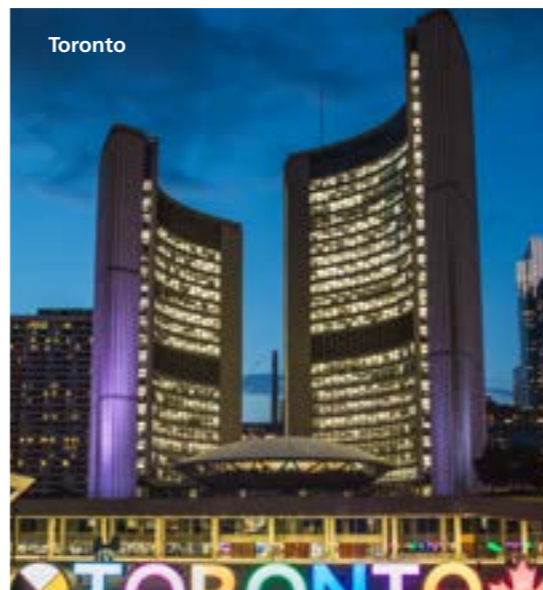
POPULATION OF
15 million



Toronto



Ottawa



Toronto



Thunder Bay



Bracebridge



Manitoulin Island



Sault Ste. Marie



Thirty Thousand Islands



Northern Ontario will immerse you
in Canadian authenticity:

Vast expanse of boreal forest,
freshwater lakes, nature trails

76% of the province's total area



POPULATION OF 780,140:
7% of Ontario's population inhabiting



Greater Sudbury

A postsecondary destination of choice with a bilingual university and two community colleges, Sudbury is friendly, diverse, inclusive and bilingual.



Comprehensive mid-size city of

170,600+

with a great mix of nature's splendor and urban amenities



330

freshwater lakes within the region



Critical northern hub for:

- ✓ Economic development
- ✓ Health
- ✓ Education
- ✓ Culture, arts and recreation
- ✓ Governmental services
- ✓ Mining and exploration



HAVEN FOR outdoor enthusiasts



38.7%

of the Greater Sudbury community is fluent in both official languages



Take a scenic tour of Bell Park in the heart of the city.

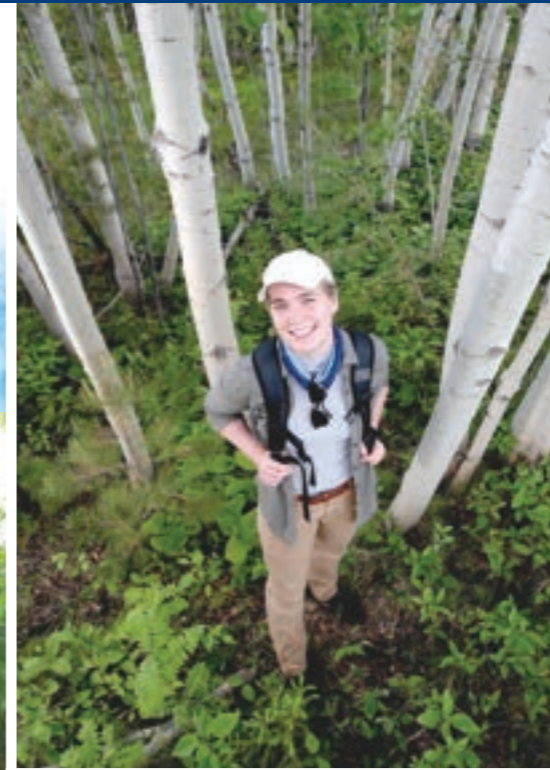




Laurentian University

Simply put, it's all here.

One of **21 universities** and **24 community colleges** governed by the Ministry of Colleges and Universities in the province of Ontario.



We are a true microcosm of Canada:

- ▶ We are northern
- ▶ We are bilingual and provide an ideal learning environment
- ▶ We pursue a tricultural mandate with a strong focus on Indigenous knowledge, culture and worldviews
- ▶ We are committed to Reconciliation
- ▶ We promote inclusion, civility and respect
- ▶ Our solutions are collaborative ones
- ▶ We are stewards of vast landscapes, beautiful environments, and natural resources
- ▶ We stand as an exemplary reflection of the Canadian postsecondary experience
- ▶ We are open, welcoming and ready to support your future studies, your journey and your career goals.



BILINGUAL
TRICULTURAL
DIVERSE
INCLUSIVE





Choose Laurentian



7,711 students enrolled

- ▶ **6,609** at the undergraduate level
- ▶ **1,102** at the graduate level



Exceptional post-graduation employment rate of

96%

(that's right, 96% of our graduates are gainfully employed when surveyed 6 months following graduation)



1:20

OUTSTANDING Prof to Student Ratio
(most favorable to academic success)

Among the
BEST SALARY
outcomes in Ontario



NATURE POSITIVE
UNIVERSITIES

Proud member of the Nature Positive Universities Alliance.
laurentian.ca/sustainability/nature-positive-pledge



67 NATIONS

REPRESENTED ON CAMPUS



All services offered in
English and French



GORGEOUS CAMPUS and AMPLE GREENSPACE



113 POSTSECONDARY PROGRAMS

68 undergraduate programs
45 graduate programs

Spotlight on **UNIQUE PROGRAMS**



- ▶ The only FEPAC-accredited **Forensics** program in Canada



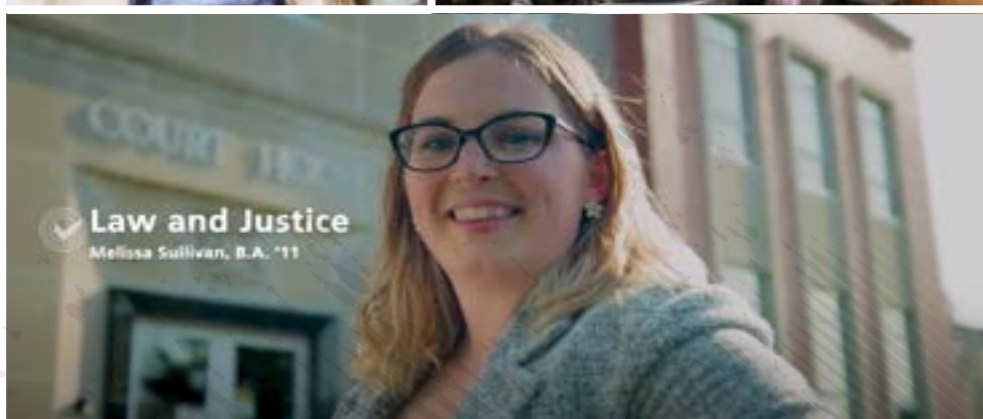
- ▶ The only speech pathology program - **Orthophonie** - offered in French in Canada
- ▶ The only undergraduate **speech pathology** program in Canada accredited by the CACUP-ASLP



- ▶ Newest **School of Architecture** in Canada
- ▶ Offers accredited undergraduate and graduate programs
- ▶ **Focus on Northern Architecture** - wood construction and renewable materials
- ▶ **Design-build** curriculum



French Droit et justice program **allows privileged access** to the Law Faculties of the University of Ottawa and Moncton University after only 3 years



Signature programs:

- Business Administration / Administration des affaires
- Engineering
- Earth Sciences
- Biomedical Biology / Biologie biomédicale
- Computer Science
- Education / Éducation
- Architecture
- Forensic Science
- Kinesiology / Kinésiologie
- Psychology / Psychologie
- Nursing
- Sciences infirmières
- Outdoor Adventure Leadership
- Droit et justice
- Criminologie
- Orthophonie
- Sports Administration



Accredited programs:

- Architecture - Canadian (CACB)
- Education (OCT)
- Éducation (OEEO)
- Sport and Physical Education (CCUPEKA-CCAUEPK)
- Health Promotion (CCUPEKA-CCAUEPK)
- Kinesiology (CCUPEKA-CCAUEPK)
- Kinésiologie (CCUPEKA-CCAUEPK)
- Engineering – Chemical, Mechanical, Mining (CEAB)
- Forensic Science (FEPAC/AAFS)
- Management (EFMD/EPAS)
- Nursing (CASN-ACESI)
- Sciences infirmières (CASN-ACESI)
- Orthophonie (CAPUC-AO)
- Social Work (CASWE-ACFTS)
- Service Social (CASWE-ACFTS)
- Chemistry (CSC)
- Biochemistry (CSC)
- Pharmaceutical Chemistry (CSC)





Our Programs

Selecting a postsecondary program is one of the most important decisions on your journey towards a great career.

Find your program of choice among Laurentian's wide variety of program offerings.

FACULTY OF ARTS

Criminal Justice (BA)	E
Criminology (BA)	E/F
Economics (BA)	E
English Literature, Media and Writing (BA)	E
Equity, Diversity and Human Rights (BA)	E/F
French as a Second Language (BA)	E
Gerontology* (BA)	E
History (BA)	E
Interdisciplinary Studies (BA)	E/F
Law and Justice (BA)	E/F
Psychology (BA/B.Sc.)	E/F
Sociology (BA)	E/F

FACULTY OF EDUCATION AND HEALTH

Education (Concurrent B.Ed.)	E
Éducation (B.Éd. concurrent)	F
Éducation (B.Éd. consécutif)	F
Éducation (B.Éd. consécutif, en plusieurs parties)	F
Health Promotion (BPHE)	E
Indigenous Social Work (HBISW)	E
Kinesiology (B.Sc.)	E/F
Kinesiology (BPHE)	E/F
Nursing (BScN)	E
Orthophonie (B.Sc.S.)	F
Outdoor Adventure Leadership (BPHE)	E
Sciences infirmières (B.Sc.Inf.)	F
Service social (B.S.S. spéc.)	F
Social Work (HBSW)	E
Sport Psychology (BA)	E/F

FACULTY OF MANAGEMENT

Business Administration (BBA)	
• Accounting (BBA)	E/F
• Entrepreneurship (B.A.A.)	F
• Finance (BBA)	E/F
• General (BBA)	E/F
• Gestion internationale (B.A.A.)	F
• Human Resources Management (BBA)	E
• Marketing (BBA)	E
Sports Administration (H.B.Com. SPAD)	E



FACULTY OF SCIENCE, ENGINEERING, AND ARCHITECTURE

Architectural Studies (BAS)	E**
Behavioural Neuroscience (B.Sc.)	E
Biochemistry (B.Sc.)	E/F
Biology (B.Sc.)	E/F
• Biomedical Biology (B.Sc.)	E/F
• Zoology (B.Sc.)	E
Chemistry (B.Sc.)	E
Computer Science (B.Cosc.)	E
• Game Design (B.Cosc.)	E
Earth Sciences (B.Sc.)	E
Engineering	
• Chemical (optional co-op) (B.Eng.)	E
• Mechanical (optional co-op) (B.Eng.)	E
• Mining (optional co-op) (B.Eng.)	E
Forensic Science (B.Sc.)	E
Interdisciplinary Science (B.Sc.)	E/F
Pharmaceutical Chemistry (B.Sc.)	E

E = offered in English F = offered in French

* = online only

** = some courses are also offered in French

Full course and program descriptions can also be found at laurentian.ca/undergraduate-programs.

The information contained in this guide is accurate as of October 31, 2023.

Certificate, diploma and graduate degree programs



CERTIFICATE OF BILINGUALISM

Students who achieve at least 15 credits in each language – English and French – during their university studies at Laurentian can earn a Certificate of Bilingualism.

DOCTORAL DEGREES

Biomolecular Sciences (PhD)	E
Boreal Ecology (PhD)	E
Engineering Science – Natural Resources (PhD)	E
Human Kinetics (PhD)	E
Human Studies and Interdisciplinarity (PhD)	E/F
Materials Science (PhD)	E
Mineral Deposits and Precambrian Geology (PhD)	E
Rural and Northern Health (PhD)	E

MASTER'S DEGREES

Architecture (M.Arch.)	E*
Biology (M.Sc.)	E*
Business Administration (MBA)	E
Chemical Sciences (M.Sc.)	E*
Computational Sciences (M.Sc.)	E
Engineering Science (M.A.Sc.)	E
Engineering Science – applied (M.Eng.)	E
Engineering Science – fast track (M.Eng.)	E
Études relationnelles – Interdisciplinaire en (M.A.)	F
Forensic Sciences (MFS)	E
Forensic Sciences + Biology (MFS)	E
Forensic Sciences + Chemistry (MFS)	E
Geology (M.Sc.)	E
Geology – Applied Mineral Exploration (M.Sc.)	E
Geology – Mineral Exploration/Accelerated (M.Sc.)	E
Health Administration (MHA)	E/F

Human Kinetics (MHK)	E/F
Indigenous Relations (MIR)	E
Interdisciplinary Health (MA, M.Sc.)	E
Nursing (MScN) •	E/F
Nurse Practitioner (M.Sc.N.)	E/F
Orthophonie (M.Sc.S.)	F
Psychology – Applied (MA)	E
Science Communication (M.Sc.Com.)	E
Social Work (MSW)	E/F

POST-GRADUATE DIPLOMA

Nurse Practitioner (G.Dip.)	E/F
Science Communication (G.Dip.)	E

PROFESSIONAL DEGREES

Éducation (B.Éd. consécutif)	F
Éducation (B.Éd. consécutif, en plusieurs parties)	F

E = offered in English F = offered in French

* = some courses available in French

• = possibility of combining with Nurse Practitioner graduate diploma program (MScN-NP)

Full program and course descriptions can also be found at laurentian.ca/graduate-programs.

The information contained in this guide is accurate as of October 31, 2023.



The Faculty of **ARTS**



- Criminal Justice (BA)
- Criminology (BA)
- Economics (BA)
- English Literature, Media and Writing (BA)
- Equity, Diversity and Human Rights (BA)
- French as a Second Language (BA)
- Gerontology – online only (BA)
- History (BA)
- Interdisciplinary Studies (BA)
- Law and Justice (BA)
- Psychology (BA/B.Sc.)
- Sociology (BA)

Upon completion of an Arts degree, credits obtained must include 6 credits in each of the following 3 pillars: Linguistic Awareness, Indigenous Content, and Scientific Literacy. Consult our website at laurentian.ca/BArequirements – searching by program – for the complete list of courses that may be used to fulfill each requirement.



I can't say enough about my program and my experience with my professors.

Through their instruction, I've learned to analyse information and view life and the world through unique perspectives. My writing style has also become more flexible to meet the needs of each project, which will prepare me well for the workforce.



SAMEER SHAFAT

3rd year, English Literature, Media and Writing (BA)



Did you know?

You can now learn Anishnaabemowin in an immersive community-led and culturally rich environment through the new Anishnaabemowin Land-Based Immersion Certificate.



WHAT YOU CAN ANTICIPATE:

- ▶ Interdisciplinary approach
- ▶ Customizable degree
- ▶ Small classes
- ▶ Supportive faculty
- ▶ Ability to achieve a Certificate of Bilingualism
- ▶ Wide-ranging career pathways
- ▶ Tight-knit program cohorts
- ▶ Engaging classes and individualized support
- ▶ Opportunities to study abroad
- ▶ Community volunteering
- ▶ Applied research
- ▶ Professional practicums
- ▶ Labs
- ▶ Travel
- ▶ Events and competitions
- ▶ Community placements
- ▶ Workplace projects



The Faculty of **EDUCATION** and **HEALTH**



PROGRAMS IN EDUCATION

- Education (Concurrent B.Ed.)
- Éducation (B.Éd. concurrent)
- Éducation (B.Éd. consécutif)
- Éducation (B.Éd. consécutif, en plusieurs parties)



Laurentian's Education program is an immersive experience.

In addition to the comprehensive course curriculum, the Education Building is designed to simulate a school, which really gives you a sense of what teaching will be like day-to-day.



ÉMILIE MÉNARD

1st year, Concurrent Education with History, B.Ed.



Did you know?

Laurentian also offers comprehensive professional development opportunities once you have graduated and are active in your profession.

WHAT YOU CAN ANTICIPATE:

- ▶ Multiple placement opportunities that meet accreditation requirements
- ▶ Several degree combinations available (Arts, Science, Social Work, Adventure Leadership, etc.)
- ▶ Accreditation standing
- ▶ Faculty-level student clubs
- ▶ Small classes, tight-knit program cohorts and supportive faculty
- ▶ Flexibility to achieve a Certificate of Bilingualism
- ▶ Engaging classes and individualized support
- ▶ Community volunteering opportunities
- ▶ Applied research and case studies
- ▶ Co-operative programs and field trips
- ▶ Professional practicums
- ▶ Labs
- ▶ Travel, events and competitions
- ▶ Internships and workplace projects



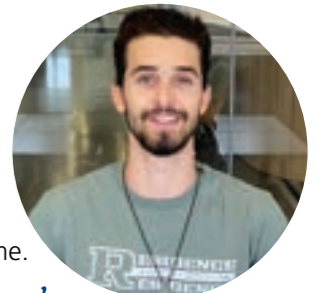


The Faculty of **EDUCATION** and **HEALTH**



PROGRAMS IN HEALTH

- Health Promotion (BPHE)
- Indigenous Social Work (HBISW)
- Kinesiology (B.Sc.)
- Kinesiology (BPHE)
- Nursing (BScN)
- Orthophonie (B.Sc.S.)
- Outdoor Adventure Leadership (BPHE)
- Sciences infirmières (B.Sc.Inf.)
- Service social (B.S.S. spéc.)
- Social Work (HBSW)
- Sport Psychology (BA)



Laurentian's Outdoor Adventure Leadership program was an ideal fit for me.

I was taken by the campus' natural landscape of forests, lakes and trails, which is an ideal setting for the program.

Structured to blend education in kinesiology and physiology with leadership skills and outdoor adventure training, the program places a strong emphasis on teamwork and my classmates have become a family. I found a sense of belonging at Laurentian.



ISAAC VESTBY

3rd year, Outdoor Adventure Leadership, BPHE



Did you know?

A new Peer Wellness program at Laurentian is fostering peer support relationships amongst students dealing with mental health challenges. Shared experiences and coaching techniques alleviate stigma and enable self-help pathways to better mental health.



WHAT YOU CAN ANTICIPATE:

- ▶ Accreditation standing (where applicable)
- ▶ Outstanding career prospects
- ▶ Supportive faculty
- ▶ Placement opportunities and internships in the community and beyond
- ▶ Experiential learning
- ▶ Work-integrated learning opportunities
- ▶ Field placements and professional practicums
- ▶ Engaging classes and individualized support
- ▶ Faculty-level student clubs
- ▶ Validation of all recommended certifications
- ▶ Applied research and case studies
- ▶ Labs
- ▶ Travel and study abroad
- ▶ Community volunteering
- ▶ Workplace projects
- ▶ Numerous graduate study opportunities



The Faculty of **MANAGEMENT**



- Business Administration (BBA)
- Accounting (BBA)
- Entrepreneurship (B.A.A.)
- Finance (BBA)
- General (BBA)
- Gestion internationale (B.A.A.)
- Human Resources (BBA)
- Marketing (BBA)
- Sports Administration (H.B.Com. SPAD)



I originally began my studies in the Architecture program with a minor in Business.



I quickly discovered just how much I loved my business classes and decided to transfer to the BBA program full time.

I couldn't be happier with my choice. I was able to customize my degree and with the smaller class sizes, I've built strong connections with faculty members and my peers.



EMILY DAVIDGE

2nd year,
Business Administration, BBA



Did you know?

As a discipline of study, Business Administration is widely popular for its breadth of options, career outcomes and unlimited potential, as well as for the ongoing market demand for graduates worldwide. As such, our Business Administration programs attract students from around the globe. Here at Laurentian, you will find that international peers provide invaluable experience and context that enrich the classroom learning environment.



WHAT YOU CAN ANTICIPATE:

- ▶ Opportunities to work and study abroad
- ▶ Paid internships, placements, case studies
- ▶ Diverse, vast, and well-connected alumni network
- ▶ Supportive faculty
- ▶ Engaging classes and individualized support
- ▶ Among highest earnings post-grad
- ▶ Various student clubs
- ▶ Advanced standing in the MBA
- ▶ Integrated CPA, CFA, CHRP courses towards accreditation where applicable
- ▶ Integrated case course to prepare students for success in the professional program
- ▶ Opportunities to work in multinational corporations and foreign organizations
- ▶ National/International field trips to work with sports teams (SPAD)
- ▶ Opportunities to participate in events and competitions
- ▶ Opportunities to apply knowledge and skills to community and workplace projects



The Faculty of **SCIENCE, ENGINEERING** and **ARCHITECTURE**



- Architectural Studies (BAS)
- Behavioural Neuroscience (B.Sc.)
- Biochemistry (B.Sc.)
- Biology (B.Sc.)
 - Biomedical Biology (B.Sc.)
 - Zoology (B.Sc.)
- Chemistry (B.Sc.)
- Computer Science (B.Cosc.)
 - Game Design (B.Cosc.)
- Earth Sciences (B.Sc.)
- Engineering (B.Eng.)
 - Chemical (co-op) (B.Eng.)
 - Mechanical (co-op) (B.Eng.)
 - Mining (co-op) (B.Eng.)
- Forensic Science (B.Sc.)
- Interdisciplinary Science (B.Sc.)
- Pharmaceutical Chemistry (B.Sc.)



I chose Laurentian's Forensic Science program for many reasons.



The program is very hands-on and the small class sizes allowed me to develop friendships and a sense of community with my peers. Throughout my four years, we were able to offer each other support and work as a team.



SAM LEAVERS
4th year, Forensic Science, B.Sc.



Did you know?

Lab time dedicated to undergraduate study at Laurentian is significant and one of the most advantageous features for students as they head into the workforce.



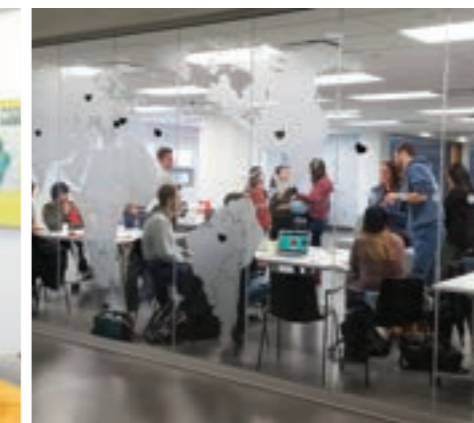
WHAT YOU CAN ANTICIPATE:

- ▶ Extensive hands-on labs, starting in 1st year
- ▶ Multidisciplinary, interdisciplinary, transdisciplinary
- ▶ Moderately sized classes allow for faculty/student engagement and individualized support
- ▶ Accreditation standing where applicable
- ▶ Co-op opportunities in many programs
- ▶ Access to research-grade equipment
- ▶ Field work experiences
- ▶ Connectivity with community partners
- ▶ Research experience at the undergraduate level
- ▶ Opportunities to interact with graduate-level students
- ▶ Access to leading research centres (Vale Living with Lakes Centre, Perdue Analytical Centre, The Foundry – ideation and innovation spaces) and many more
- ▶ Dedicated laboratories (science and engineering), workshops (engineering and architecture) and studio spaces (architecture)
- ▶ Relevant summer work opportunities
- ▶ Faculty-level student clubs and amenities
- ▶ Numerous graduate study opportunities



Your Success

Students thrive in an environment that supports their academic success.



It all starts with a personalized approach to teaching, extensive infrastructure for individual student coaching and assistance, and genuine caring for each student's wellbeing. Here, you will find a full complement of academic resources and supports:

Campus Security

- Year-round 24/7 service
- Work Alone Program
- Safe Walk Program
- LUCERT Campus Emergency Response Team

Career and Employment Services

- Many job opportunities on campus
- Postings of job and career opportunities

Centre for Continuing Learning

- Laurentian Online
- 24 degree programs and 400 courses fully delivered online

Daycare Services

- Laurentian Child and Family Centre
- Garderie Touche-à-tout (francophone)

Due North Campus Store

- School supplies and branded gear

Equity, Diversity and Human Rights Office

Health and Wellness Services

- Registered nurses and nurse practitioners on staff and access to a primary care physician by appointment

Indigenous Sharing and Learning Centre

International Student Services

Liaison Services

- School visits, campus tours, Open House, academic pathways discussions

Library and Archives

- 1.5 million resources at the tip of your fingers!
- Research workshops and assistance

Multi-faith Prayer Space

MyLaurentian Hub

- Admissions, Records, Fees and Awards

Pride@LU

Printing Services

Recreation

Residence Life

Safer Space Program

- Nurturing environment for our LGBTQ2S+ community

Student Success Centre

- Orientation, transition and advising support
- Counselling and Accessibility
- Learning Commons
- Peer Support Programs (Peer Academic Program, Peer Coach Program, Peer Wellness Program)

Voyageurs/Varsity Athletics

Women's Centre



Life on Campus

As a Laurentian student, you'll find plenty to do and experience.

360° View a virtual aerial tour of campus: virtualtour.laurentian.ca

- ▶ Employment opportunities - on and off campus
- ▶ Broad range of student clubs
- ▶ Broad range of intramural sports
- ▶ 17 athletic teams that compete at the varsity level
- ▶ Hundreds of student activities and events
- ▶ 3 student associations



VOYAGEURS

Varsity sports at its best!

- ▶ Baseball (men's)
- ▶ Basketball
- ▶ Cross Country
- ▶ Curling
- ▶ Golf
- ▶ Indoor Track
- ▶ Nordic Skiing
- ▶ Rowing
- ▶ Soccer

First year residences ▶



Current high school students are guaranteed a spot in residence when they apply to **University College** or **Single Student Residence** before June 3, 2024*.

*Preferred accommodation is based on availability.

Upper year residences ▶



24/7 campus security: surveillance and porters

- ▶ Supportive, engaged community
- ▶ Safe and secure environment
- ▶ Transit service at your doorstep
- ▶ 100's of residence activities
- ▶ Multiple residences with a few minute walking distance
- ▶ 24/7 porter and campus security service
- ▶ Vibrant residence life & great network of friends
- ▶ Minutes from food services
- ▶ 5 minutes by public transit to shopping, restaurants, entertainment
- ▶ Dedicated health services clinic

LAURENTIAN UNIVERSITY



SINGLE STUDENT RESIDENCE



UNIVERSITY COLLEGE RESIDENCE



HUNTINGTON RESIDENCE

LAURENTIAN UNIVERSITY



WEST RESIDENCE



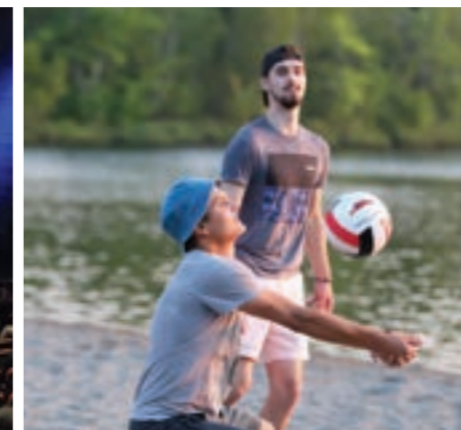
MATURE STUDENT RESIDENCE



EAST RESIDENCE

1,214 student spaces in our residences

600 residence spaces reserved for first year students





Money Matters

UNDERGRADUATE PROGRAMS *(Fees based on one academic year)*

	TUITION	SGA <i>(incidentals)</i>	UHIP	TUITION + SGA + UHIP
Most programs (30 cr.)	\$27,258.00	\$1,333.78	\$756.00	\$29,347.78
Architecture (30 cr.)	\$34,206.90	\$1,333.78	\$756.00	\$36,296.68
Business Administration (30 cr.)	\$29,231.60	\$1,333.78	\$756.00	\$31,321.38
Engineering (36 cr.)	\$37,225.91	\$1,333.78	\$756.00	\$39,315.69

GRADUATE STUDIES *(Fees based on one academic year)*

	TUITION	GSA <i>(incidentals)</i>	UHIP	TUITION + GSA + UHIP
Most Master's programs	\$22,911.53	\$1,099.73	\$756.00	\$24,767.26
Most PhD programs	\$23,397.23	\$1,099.73	\$756.00	\$25,252.96
Architecture, M.Arch.	\$18,299.73	\$1,099.73	\$756.00	\$20,155.46
Business Administration, MBA	\$34,285.33	\$1,099.73	\$756.00	\$36,141.06
Chemical Sciences, M.Sc. (Critical Essay Stream)	\$19,806.97	\$1,099.73	\$756.00	\$21,662.70
Computational Sciences, M.Sc. (course-based)	\$16,255.73	\$1,099.73	\$756.00	\$18,111.46
Engineering, M.Eng. (course-based)	\$16,255.73	\$1,099.73	\$756.00	\$18,111.46
Geology - Applied Mineral Exploration, M.Sc. (course-based)	\$14,917.33	\$1,099.73	\$756.00	\$16,773.06

*Supplemental fees may apply to certain courses in addition to tuition. Fees pertain to the 2023-2024 academic year and are presented in Canadian currency. At the time of printing, tuition and incidental fees for the 2024-2025 academic year were not available. Please consult our website at laurentian.ca/fees-financing for up-to-date information.
 •Note that tuition is based on the credit load (number and duration of courses).
 •Part-time students (fewer than 18 credits of study) and students with partial full-time (18-27 credits) loads are encouraged to consult our website for further breakdown of fees.



A snapshot of what your budget might look like based on eight months of full-time undergraduate study and your needs and lifestyle:



	Living in residence or renting
Books Supplies Field trips	\$1,000
Accommodations Housing	\$6,738 - \$8,739
Meals	\$4,075 - \$5,420
Vehicle	\$0 - \$2,000
Entertainment Personal	\$1,000 - \$2,500
Trips back home	\$1,000 - \$1,250
TOTAL RANGE	\$20,941 - \$28,242

Fees pertain to the 2023-2024 academic year. At the time of printing, tuition fees and incidental fees for the 2024-2025 academic year were not available.

A student bus pass is included in Laurentian students' activity fees.



Up to \$60,000 for academic achievement

The most GENEROUS INTERNATIONAL SCHOLARSHIP PROGRAM in Canada!

Laurentian is breaking ground in making postsecondary education at a Canadian university the most accessible ever! High achieving international students with a grade average* of:

90% - 100% Up to **\$60,000** in scholarship awards
(\$15,000 in first year, renewable in subsequent years provided average is maintained)

80 - 89.9% Up to **\$40,000** in scholarship awards
(\$10,000 in first year, renewable in subsequent years provided average is maintained)

*Averages are calculated automatically based on equivalency-adjusted GPA using the World Education Services tables.

New SCHOLARSHIP PROGRAM for international students :

Step-by-step admissions

STEP
1

Consult our website for detailed program descriptions and admissions criteria

Undergraduate Level: laurentian.ca/undergraduate-programs
Graduate Level: laurentian.ca/graduate-programs

Once your program is chosen, admissions criteria can be found under "Program Details".

STEP
2

Obtain admission requirements

Undergraduate Admissions – please consult the admissions requirements pertaining to your country: laurentian.ca/international/undergraduate-admissions#country-listing

Graduate Admissions – please consult our step-by-step instructions located at: laurentian.ca/admissions/graduate#steps-apply

STEP
3

Apply online to our programs by selecting the "Apply Now" button on our website

Undergraduate Level: laurentian.ca/international/undergraduate-admissions
Graduate Level: laurentian.ca/admissions/graduate

STEP
4

Log-in to the Applicant Portal at my.laurentian.ca

Once you have submitted your application, you will receive an acknowledgement letter with instructions for the online applicant portal. You must activate your Laurentian Applicant Portal by clicking on the yellow bar "New to Laurentian" to begin the process of submitting your transcripts and supporting documentation for your application(s).

While you await an official offer, consult our resources for information on acquiring a study permit at laurentian.ca/international-student-services.

STEP
5

Accept your offer of admission and submit your deposit

If you have been admitted to Laurentian, you will be required to accept your offer of admission on the applicant portal: my.laurentian.ca or via the Ontario University Application Centre (OUAC) depending on the method you used to apply.

To reserve your place, you must submit a CAD \$2,000 deposit. Our Deposit Policy for International Students can be found on our website at laurentian.ca/international/fees.

STEP
6

Place your request for a study permit with the Government of Canada

canada.ca/en/immigration-refugees-citizenship/services/study-canada/study-permit

Your offer of admission from Laurentian will be a required official document in this process. Ensure that you have all the required documents and a letter of motivation to proceed with your study permit application.

STEP
7

Apply for residence accommodations at my.laurentian.ca and log-in regularly for updates

Information on accommodations can be found at laurentian.ca/accommodations. Review the details and conditions of your offer and look forward to receiving further communication on your next steps.

STEP
8

Advise Laurentian University of the updated status and the result of your study permit application

We are happy to assist you with this process. Send us an email at international@laurentian.ca and inform us of the status of your study permit application. This will ensure the portal my.laurentian.ca reflects your updated status and provides the appropriate follow-up steps.

Language requirements

English language programs

- ▶ TOEFL (iBT) – English as a Foreign Language – 88 overall ^{OR}
- ▶ TOEFL (CBT) – English as a Foreign Language – 230 overall ^{OR}
- ▶ IELTS – International English Language Testing System – 6.5 overall; no band lower than 6.0 ^{OR}
- ▶ Cambridge Assessment English – C1 Advanced or C2 Proficiency with a Cambridge Score of 176 or more ^{OR}
- ▶ CAEL – Canadian Academic English Language Assessment – 70 overall; no part below 60 ^{OR}
- ▶ Canadian Test of English for Scholars and Trainees – CanTEST – 4.5 overall; no part below 4 ^{OR}
- ▶ PTE Academic Test of English – 60 overall

French language programs

- ▶ Three years of full-time study in a high school or post-secondary institution where French is the language of instruction (documentation must be provided by the student). ^{OR}
- ▶ A minimum grade of C-1 (advanced) on the Test de connaissance du français (TCF), version for prospective students. ^{OR}
- ▶ A minimum score of C-1 at the written component of the Test d'évaluation du français (TEF). ^{OR}
- ▶ Diplôme approfondi de langue française (DALF) with a minimum score of C-1. ^{OR}





How to Apply

DIRECTLY TO LAURENTIAN

laurentian.ca/international

OR

THROUGH OUAC

Apply online to the Ontario Universities' application Centre (OUAC) at ouac.on.ca



- Use application form 105 F
- You will receive an email confirmation from OUAC
- You will receive an email regarding the status of an offer from Laurentian with access to your student portal for all pertinent information.



For all the right reasons

Unparalleled Employment Outcomes

Laurentian's post-graduation employment rate has **CONSISTENTLY RANKED IN THE TOP 3** among all universities in the province for more than a decade!

96%



post-graduation employment (after 6 months)

Ministry of Colleges and Universities 2021 KPI Surveys

- Outstanding Programs
- Engaged and Dedicated Professors
- Unparalleled Employment Outcomes
- Focus on Interdisciplinarity
- Bilingual Learning Environment
- Rich Tricultural Knowledge
- Flexible Transfer Pathways
- Gorgeous Campus and Ample Greenspace
- Enriched Student Life
- Nurturing Residence Living Setting
- Voyageur Spirit
- Safe, Diverse and Welcoming City and Community



LaurentianUniversity
UniversitéLaurentienne

info@laurentian.ca + 1 800-461-4030

For detailed information on our programs consult:
laurentian.ca/international

Find and follow us:

 Laurentian University
Voyageurs2028

 @laurentianu

 Laurentian University

 @laurentianu

 Laurentian University

 @laurentianu